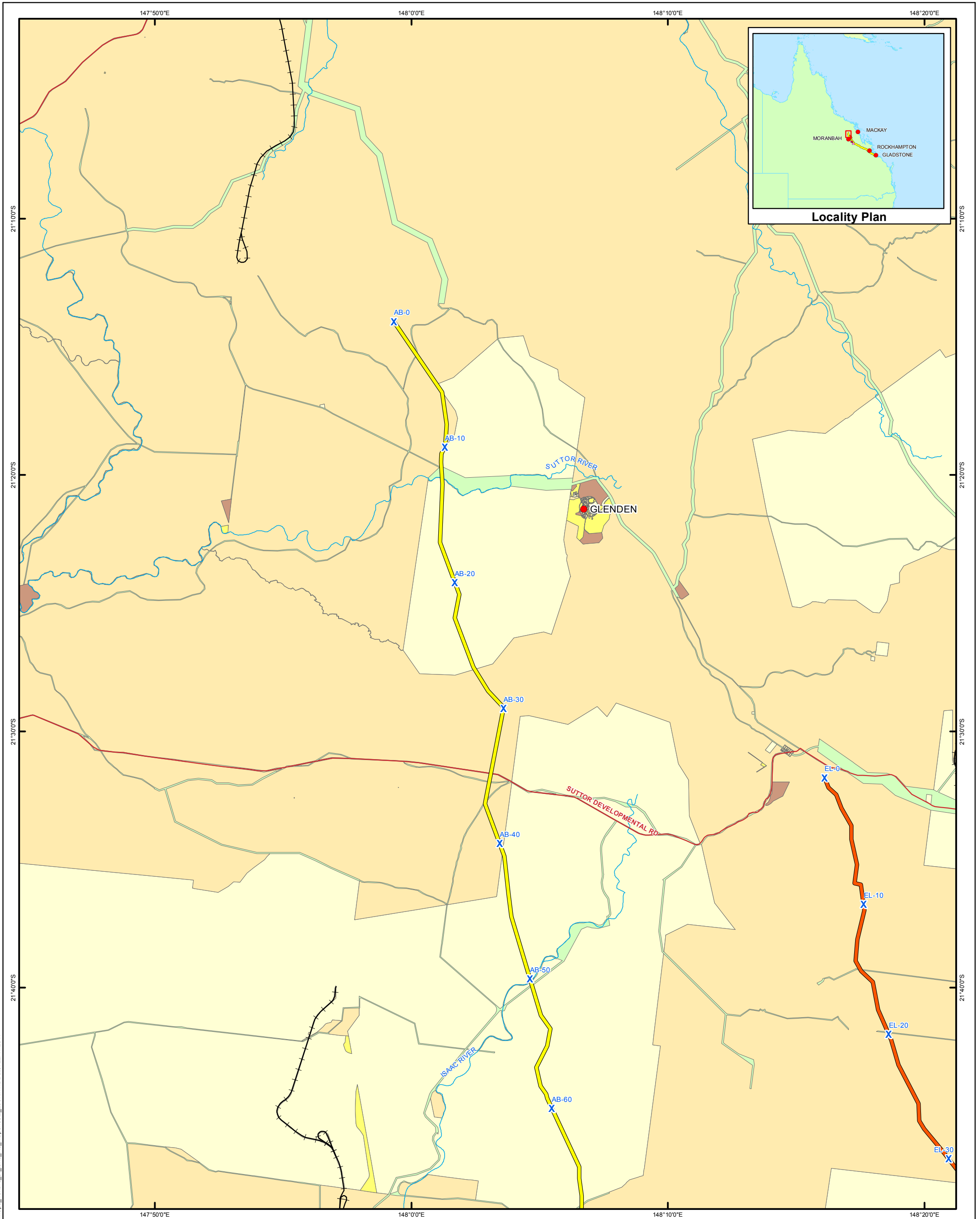




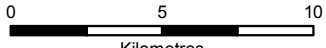
# ARROW BOWEN PIPELINE PRELIMINARY ROUTE (REV D)



**Map 3: Tenure of land**

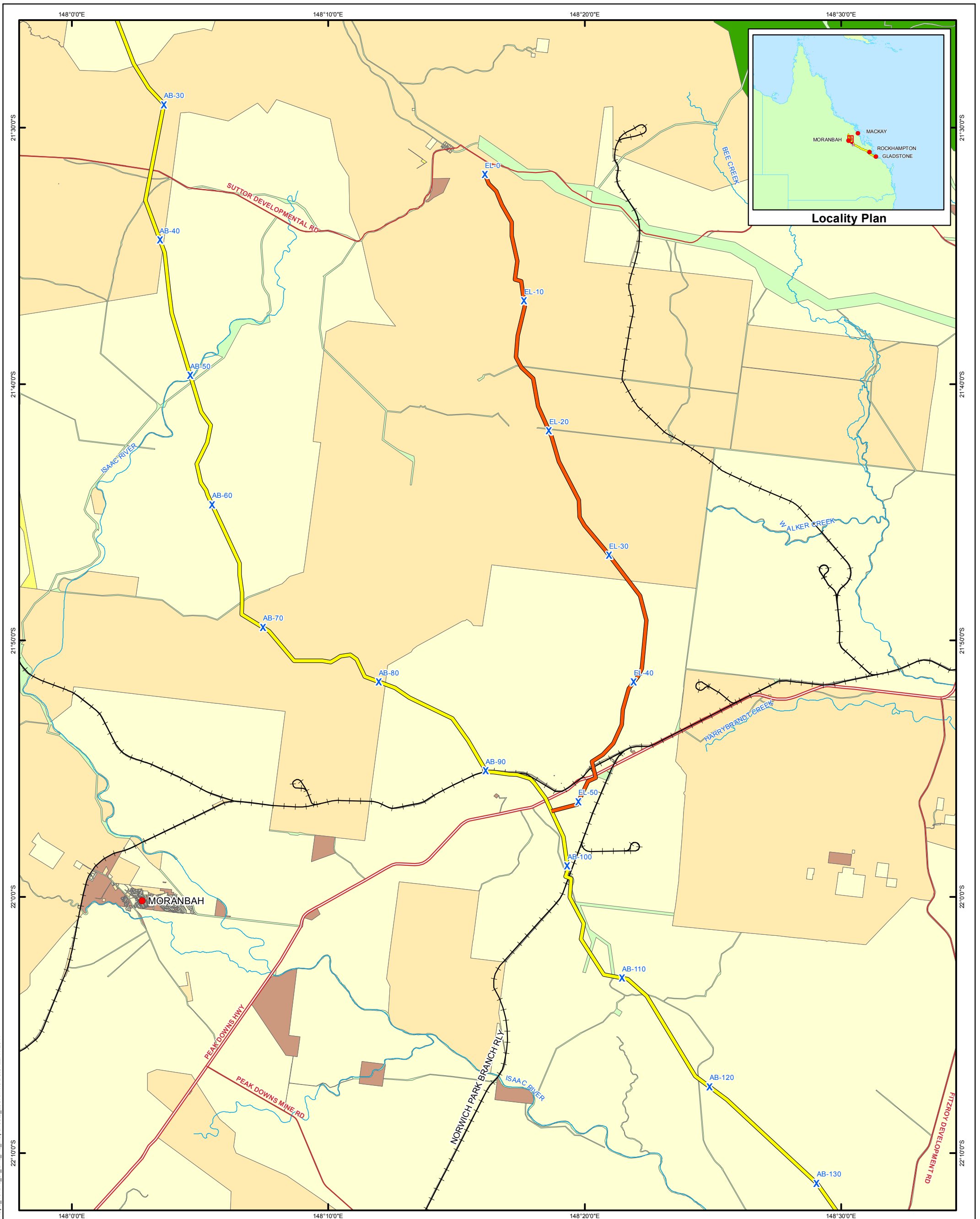
● Localities	— Highways	— FD - Below the Depth Plans	— LL - Lands Lease	— RY - Railway
✕ Kilometre Points	— Major Roads	— FH - Freehold	— MR - Main Road	— SF - State Forest
— AB Mainline Rev D	— Major Watercourses	— FR - Forest Reserve	— MT - Mines Tenure	— SL - State Land
— Dysart Lateral Rev D	— CA - Commonwealth Acquisition	— HL - Housing Land	— NP - National Park	— TP - Transferred Property
— Elphinstone Lateral Rev D	— CV - Covenant	— HM - Boat Harbours	— PH - Port and Harbours Boards	— TR - Timber Reserve
— Saraji Lateral Rev D	— ID - Industrial Estates	— RE - Reserve	— WR - Water Resource	
— Railways				

Data Sources:  
 StreetPro: Localities, Roads, Railways  
 DERM: Land Tenures, Major Watercourses  
 Data Supplied by Arrow Energy:  
 ABP Mainline RevD,  
 ABP Lateral RevD  
 Kilometre Points

  
  
  
 Scale: 1:250,000 @ A3  
 Coordinate System: GCS GDA 1994

**NOT FOR CONSTRUCTION**



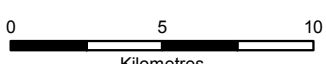
# ARROW BOWEN PIPELINE PRELIMINARY ROUTE (REV D)



Map 3: Tenure of land

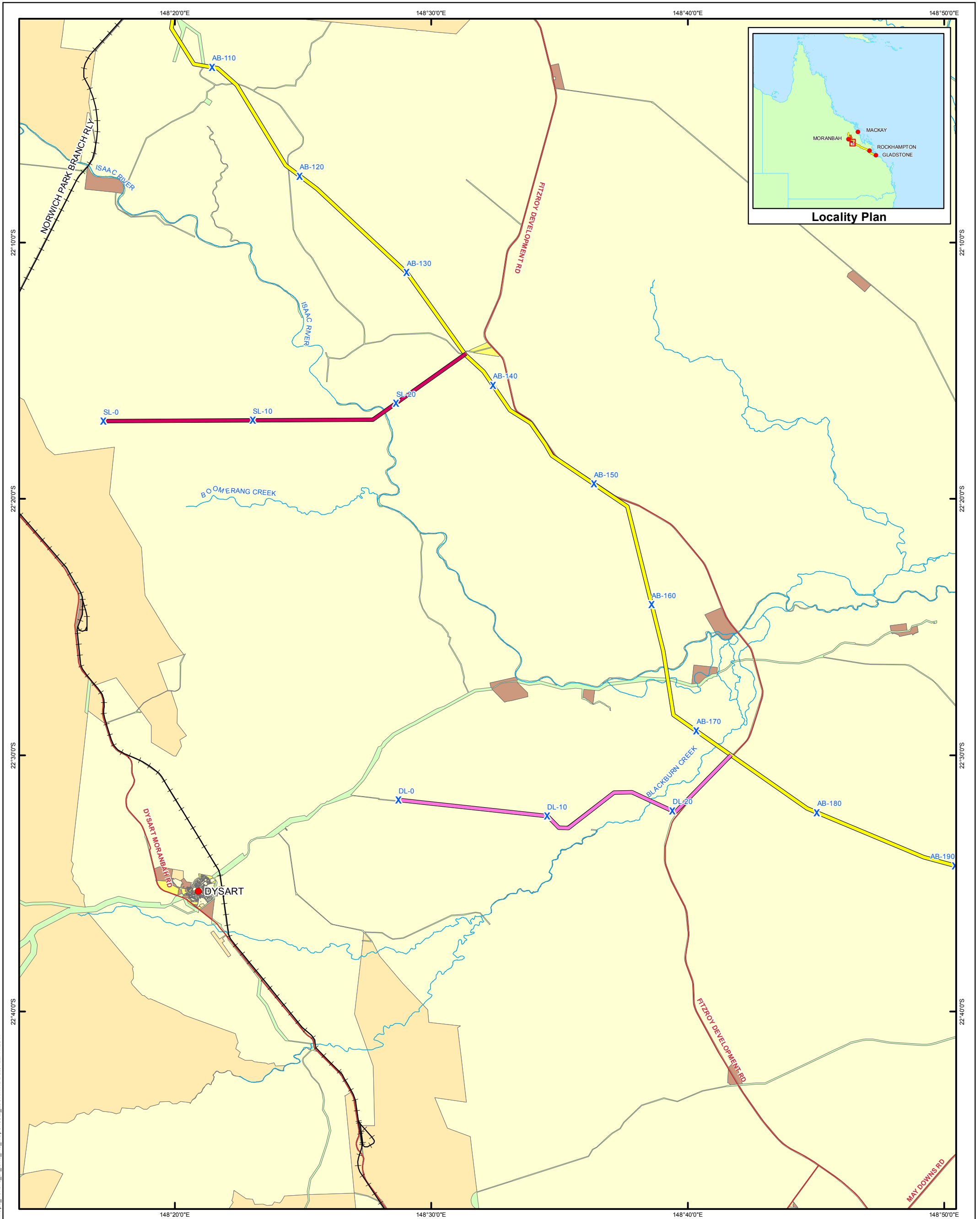
Legend	
● Localities	Highways
✕ Kilometre Points	Major Roads
— AB Mainline Rev D	Major Watercourses
— Dysart Lateral Rev D	CA - Commonwealth Acquisition
— Elphinstone Lateral Rev D	CV - Covenant
— Saraji Lateral Rev D	FD - Below the Depth Plans
— Railways	FH - Freehold
	FR - Forest Reserve
	HL - Housing Land
	HM - Boat Harbours
	ID - Industrial Estates
	LL - Lands Lease
	MR - Main Road
	MT - Mines Tenure
	NP - National Park
	PH - Port and Harbours Boards
	RE - Reserve
	RY - Railway
	SF - State Forest
	SL - State Land
	TP - Transferred Property
	TR - Timber Reserve
	WR - Water Resource

Data Sources:  
 StreetPro: Localities, Roads, Railways  
 DERM: Land Tenures, Major Watercourses  
 Data Supplied by Arrow Energy:  
 ABP Mainline RevD,  
 ABP Lateral RevD  
 Kilometre Points

  
 go further  
  
  
 Scale: 1:250,000 @ A3  
 Coordinate System: GCS GDA 1994

NOT FOR CONSTRUCTION

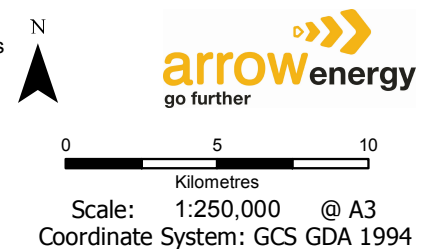
# ARROW BOWEN PIPELINE PRELIMINARY ROUTE (REV D)



**Map 3: Tenure of land**

Legend				
● Localities	Highways	FD - Below the Depth Plans	LL - Lands Lease	RY - Railway
✕ Kilometre Points	Major Roads	FH - Freehold	MR - Main Road	SF - State Forest
AB Mainline Rev D	Major Watercourses	FR - Forest Reserve	MT - Mines Tenure	SL - State Land
Dysart Lateral Rev D	CA - Commonwealth Acquisition	HL - Housing Land	NP - National Park	TP - Transferred Property
Elphinstone Lateral Rev D	CV - Covenant	HM - Boat Harbours	PH - Port and Harbours Boards	TR - Timber Reserve
Saraji Lateral Rev D		ID - Industrial Estates	RE - Reserve	WR - Water Resource
— Railways				

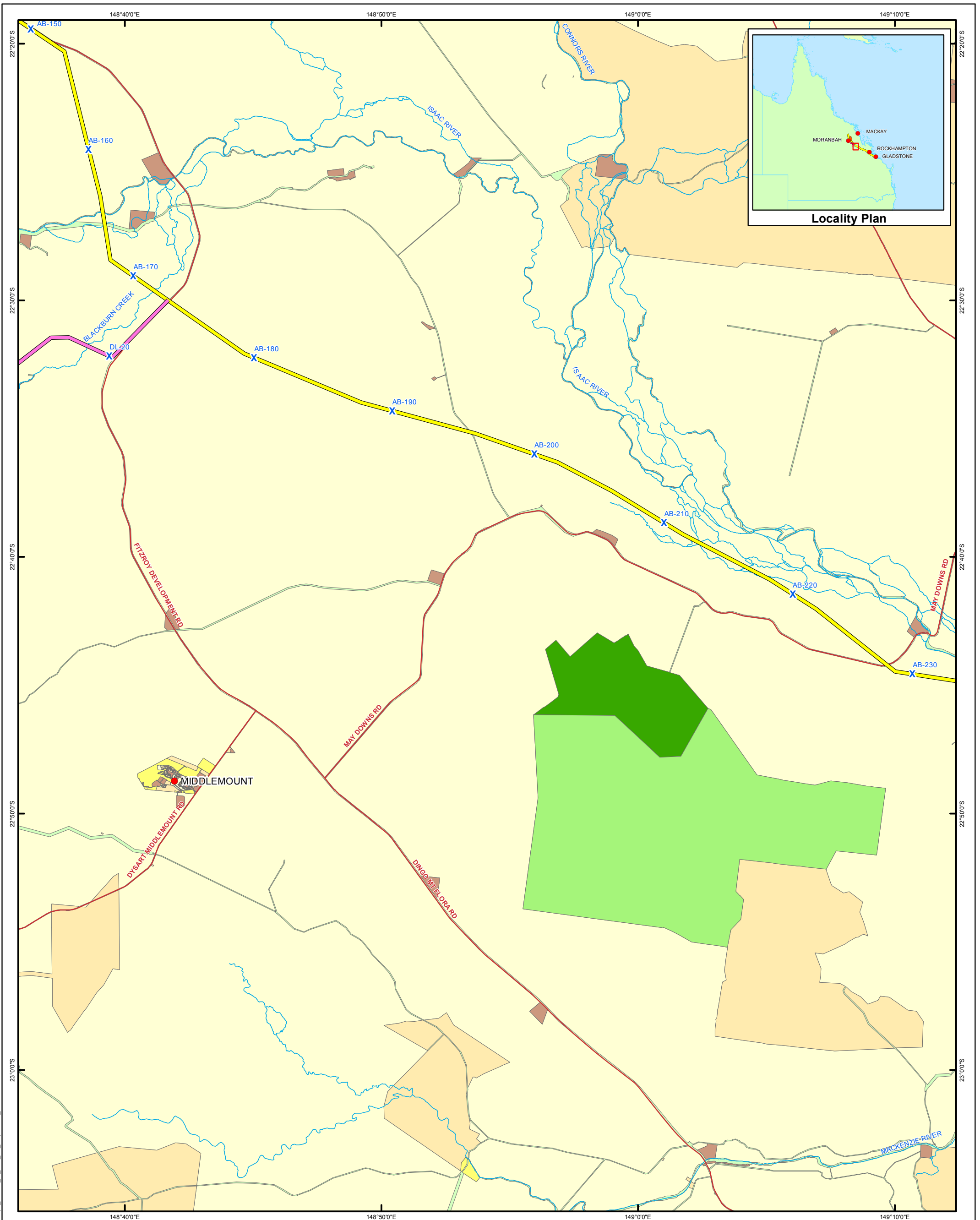
Data Sources:  
 StreetPro: Localities, Roads, Railways  
 DERM: Land Tenures, Major Watercourses  
 Data Supplied by Arrow Energy:  
 ABP Mainline RevD,  
 ABP Lateral RevD  
 Kilometre Points



**NOT FOR CONSTRUCTION**





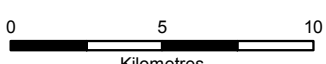
# ARROW BOWEN PIPELINE PRELIMINARY ROUTE (REV D)



**Map 3: Tenure of land**

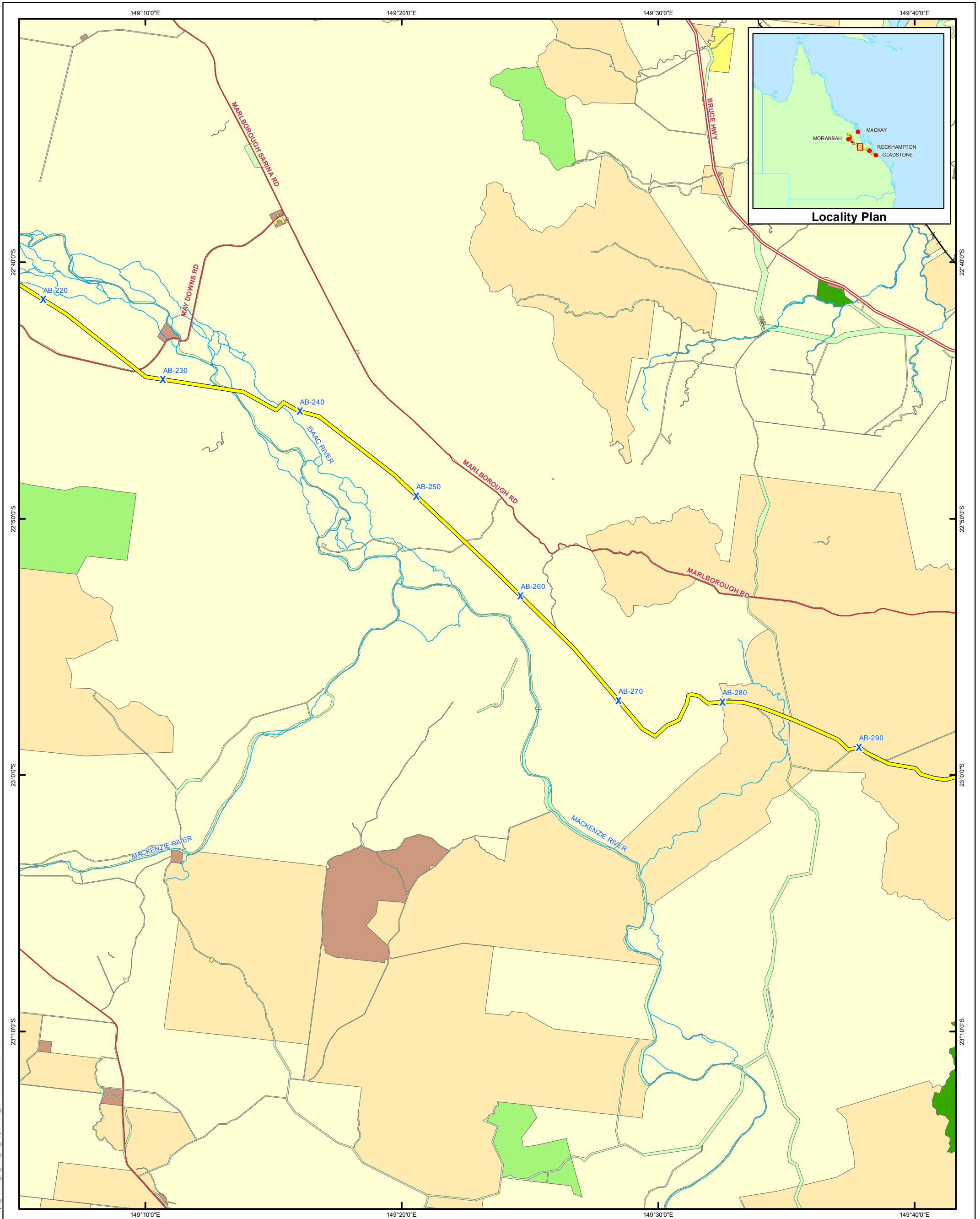
Legend	
● Localities	Highways
X Kilometre Points	Major Roads
AB Mainline Rev D	Major Watercourses
Dysart Lateral Rev D	CA - Commonwealth Acquisition
Elphinstone Lateral Rev D	CV - Covenant
Saraji Lateral Rev D	FD - Below the Depth Plans
— Railways	FH - Freehold
	FR - Forest Reserve
	HL - Housing Land
	HM - Boat Harbours
	ID - Industrial Estates
	LL - Lands Lease
	MR - Main Road
	MT - Mines Tenure
	NP - National Park
	PH - Port and Harbours Boards
	RE - Reserve
	RY - Railway
	SF - State Forest
	SL - State Land
	TP - Transferred Property
	TR - Timber Reserve
	WR - Water Resource

Data Sources:  
 StreetPro: Localities, Roads, Railways  
 DERM: Land Tenures, Major Watercourses  
 Data Supplied by Arrow Energy:  
 ABP Mainline RevD,  
 ABP Lateral RevD  
 Kilometre Points

  
  
  
 Scale: 1:250,000 @ A3  
 Coordinate System: GCS GDA 1994

**NOT FOR CONSTRUCTION**

# ARROW BOWEN PIPELINE PRELIMINARY ROUTE (REV D)



**Map 3: Tenure of land**

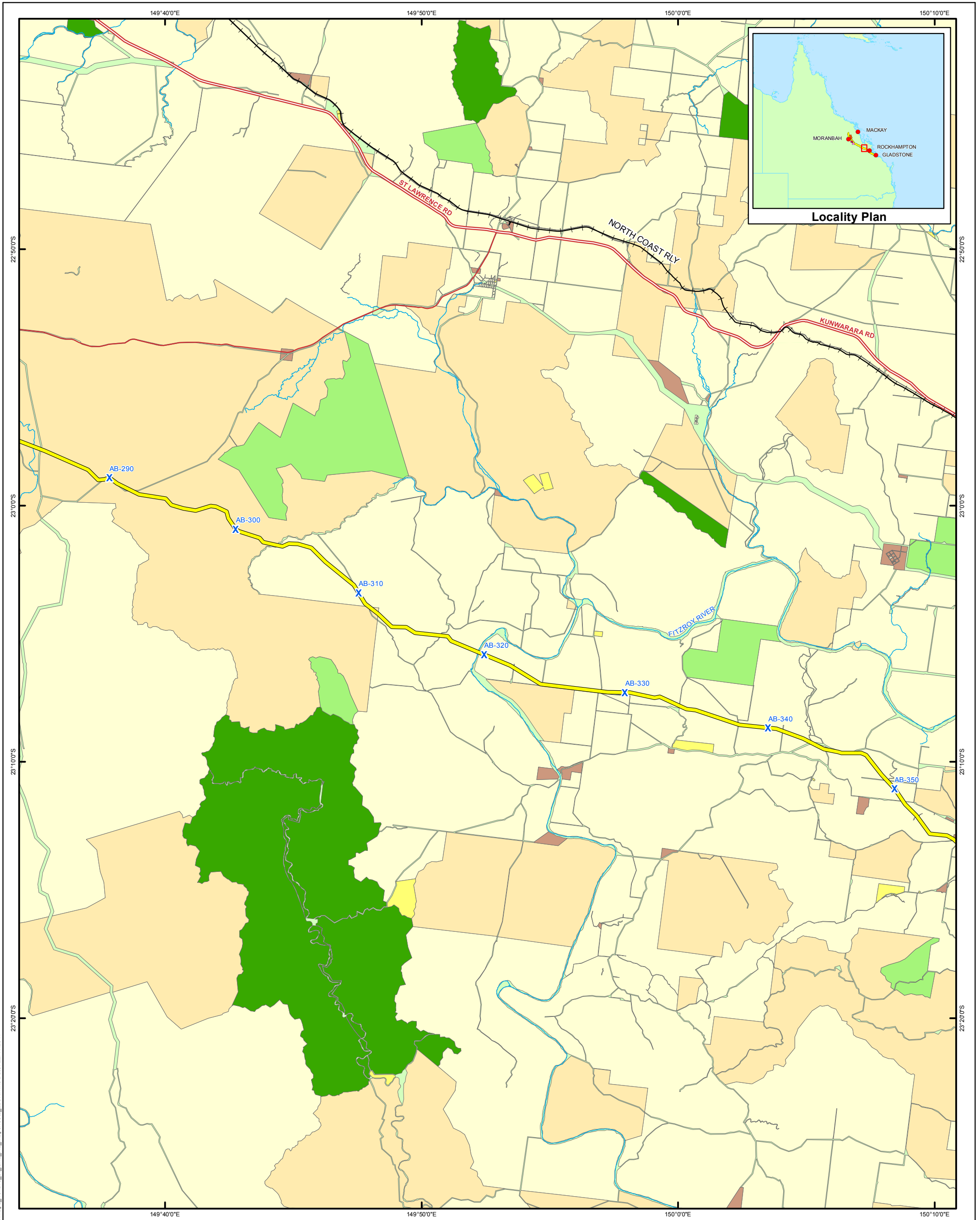
● Localities	— Highways	□ FD - Below the Depth Plans	□ LL - Lands Lease	■ RY - Railway
✕ Kilometre Points	— Major Roads	□ FH - Freehold	■ MR - Main Road	■ SF - State Forest
— AB Mainline Rev D	— Major Watercourses	□ FR - Forest Reserve	■ MT - Mines Tenure	■ SL - State Land
— Dysart Lateral Rev D	— CA - Commonwealth Acquisition	■ HL - Housing Land	■ NP - National Park	■ TP - Transferred Property
— Elphinstone Lateral Rev D	— CV - Covenant	■ HM - Boat Harbours	■ PH - Port and Harbours Boards	■ TR - Timber Reserve
— Saraji Lateral Rev D	— ID - Industrial Estates	■ RE - Reserve	■ WR - Water Resource	
— Railways				

Data Sources:  
 StreetPro: Localities, Roads, Railways  
 DERM: Land Tenures, Major Watercourses  
 Data Supplied by Arrow Energy:  
 ABP Mainline RevD,  
 ABP Lateral RevD  
 Kilometre Points

Scale: 1:250,000 @ A3  
 Coordinate System: GCS GDA 1994

**NOT FOR CONSTRUCTION**

# ARROW BOWEN PIPELINE PRELIMINARY ROUTE (REV D)



**Map 3: Tenure of land**

● Localities	— Highways	FD - Below the Depth Plans	LL - Lands Lease	RY - Railway
X Kilometre Points	— Major Roads	FH - Freehold	MR - Main Road	SF - State Forest
— AB Mainline Rev D	— Major Watercourses	FR - Forest Reserve	MT - Mines Tenure	SL - State Land
— Dysart Lateral Rev D	CA - Commonwealth Acquisition	HL - Housing Land	NP - National Park	TP - Transferred Property
— Elphinstone Lateral Rev D	CV - Covenant	HM - Boat Harbours	PH - Port and Harbours Boards	TR - Timber Reserve
— Saraji Lateral Rev D	—	ID - Industrial Estates	RE - Reserve	WR - Water Resource
— Railways				

Data Sources:  
 StreetPro: Localities, Roads, Railways  
 DERM: Land Tenures, Major Watercourses  
 Data Supplied by Arrow Energy:  
 ABP Mainline RevD,  
 ABP Lateral RevD  
 Kilometre Points

N

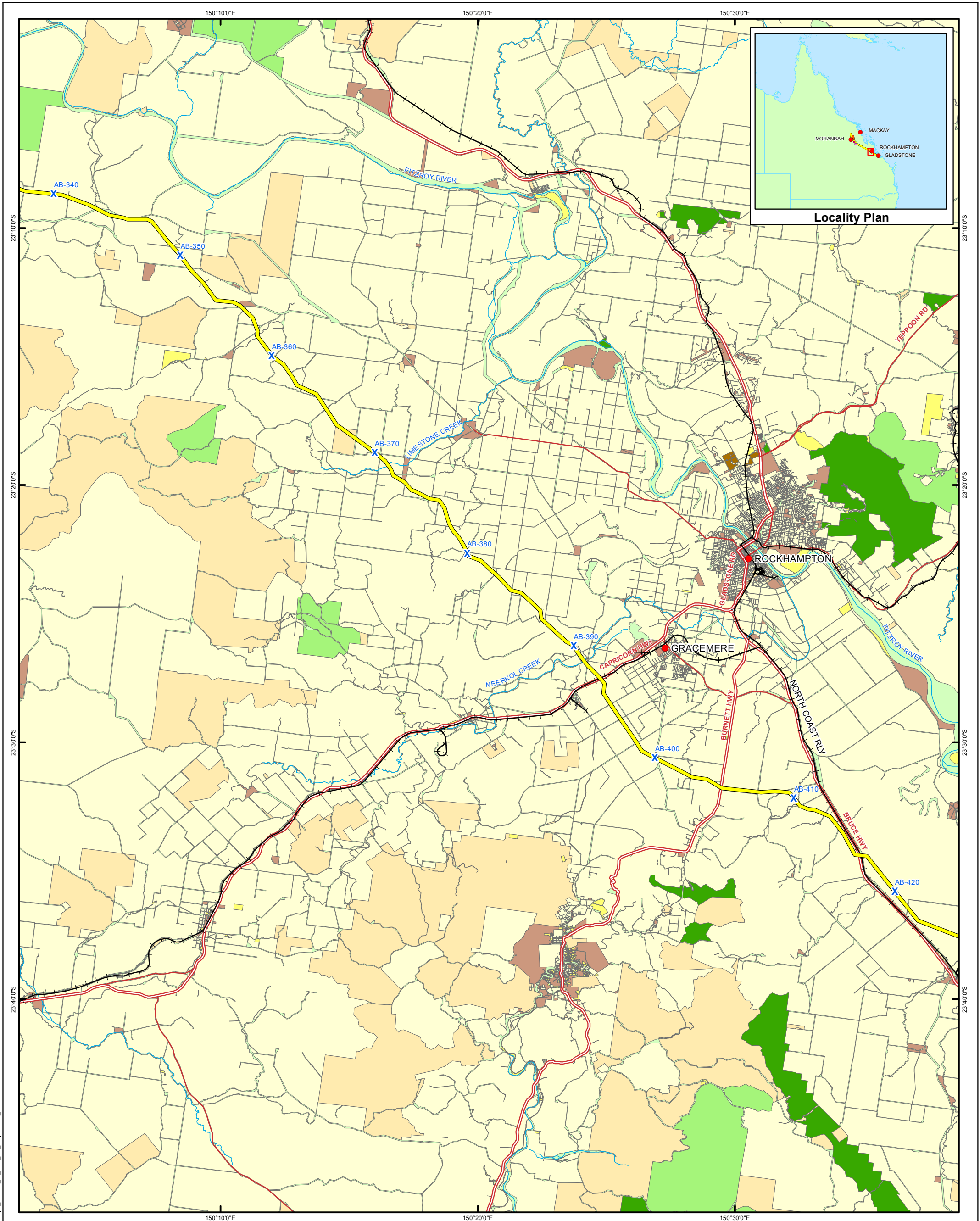
0 5 10  
Kilometres

Scale: 1:250,000 @ A3  
 Coordinate System: GCS GDA 1994

**NOT FOR CONSTRUCTION**



# ARROW BOWEN PIPELINE PRELIMINARY ROUTE (REV D)



**Map 3: Tenure of land**

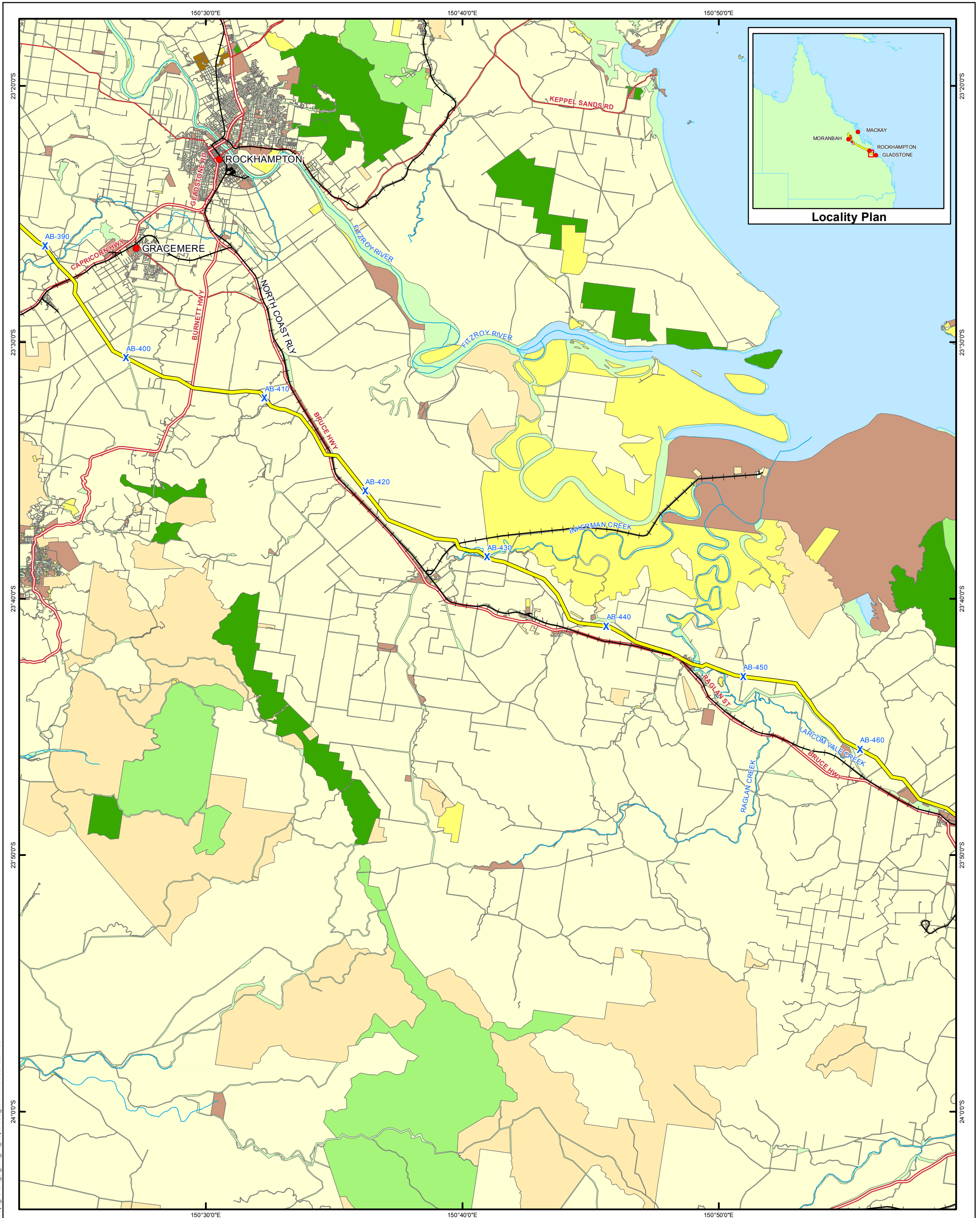
<p><b>Legend</b></p> <ul style="list-style-type: none"> <li>● Localities</li> <li>X Kilometre Points</li> <li>— AB Mainline Rev D</li> <li>— Dysart Lateral Rev D</li> <li>— Elphinstone Lateral Rev D</li> <li>— Saraji Lateral Rev D</li> <li>— Railways</li> </ul>	<ul style="list-style-type: none"> <li>— Highways</li> <li>— Major Roads</li> <li>— Major Watercourses</li> <li>— CA - Commonwealth Acquisition</li> <li>— CV - Covenant</li> </ul>	<ul style="list-style-type: none"> <li>— FD - Below the Depth Plans</li> <li>— FH - Freehold</li> <li>— FR - Forest Reserve</li> <li>— HL - Housing Land</li> <li>— HM - Boat Harbours</li> <li>— ID - Industrial Estates</li> </ul>	<ul style="list-style-type: none"> <li>— LL - Lands Lease</li> <li>— MR - Main Road</li> <li>— MT - Mines Tenure</li> <li>— NP - National Park</li> <li>— PH - Port and Harbours Boards</li> <li>— RE - Reserve</li> </ul>	<ul style="list-style-type: none"> <li>— RY - Railway</li> <li>— SF - State Forest</li> <li>— SL - State Land</li> <li>— TP - Transferred Property</li> <li>— TR - Timber Reserve</li> <li>— WR - Water Resource</li> </ul>	<p>Data Sources:                  StreetPro: Localities, Roads, Railways                  DERM: Land Tenures, Major Watercourses                  Data Supplied by Arrow Energy:                  ABP Mainline RevD,                  ABP Lateral RevD                  Kilometre Points</p>	<p>N</p> <p>0 5 10 Kilometres</p> <p>Scale: 1:250,000 @ A3                  Coordinate System: GCS GDA 1994</p>	<p>arrowenergy go further</p>
---	---	--	--	---	--	---	-----------------------------------

**NOT FOR CONSTRUCTION**

Document: I:\ENV\Projects\EN02962\_Spatial\ArcGIS\2\Map3\_Tenure\_of\_land\_A3\_Map3sheets\_250K.mxd Date: 22/11/2011



# ARROW BOWEN PIPELINE PRELIMINARY ROUTE (REV D)



**Map 3: Tenure of land**

Legend			
● Localities	Highways	FD - Below the Depth Plans	LL - Lands Lease
✕ Kilometre Points	Major Roads	FH - Freehold	MR - Main Road
AB Mainline Rev D	Major Watercourses	FR - Forest Reserve	MT - Mines Tenure
Dysart Lateral Rev D	CA - Commonwealth Acquisition	HL - Housing Land	NP - National Park
Elphinstone Lateral Rev D	CV - Covenant	HM - Boat Harbours	PH - Port and Harbours Boards
Saraji Lateral Rev D		ID - Industrial Estates	RE - Reserve
— Railways			RY - Railway
			SF - State Forest
			SL - State Land
			TP - Transferred Property
			TR - Timber Reserve
			WR - Water Resource

Data Sources:  
 StreetPro: Localities, Roads, Railways  
 DERM: Land Tenures, Major Watercourses  
 Data Supplied by Arrow Energy:  
 ABP Mainline RevD,  
 ABP Lateral RevD  
 Kilometre Points

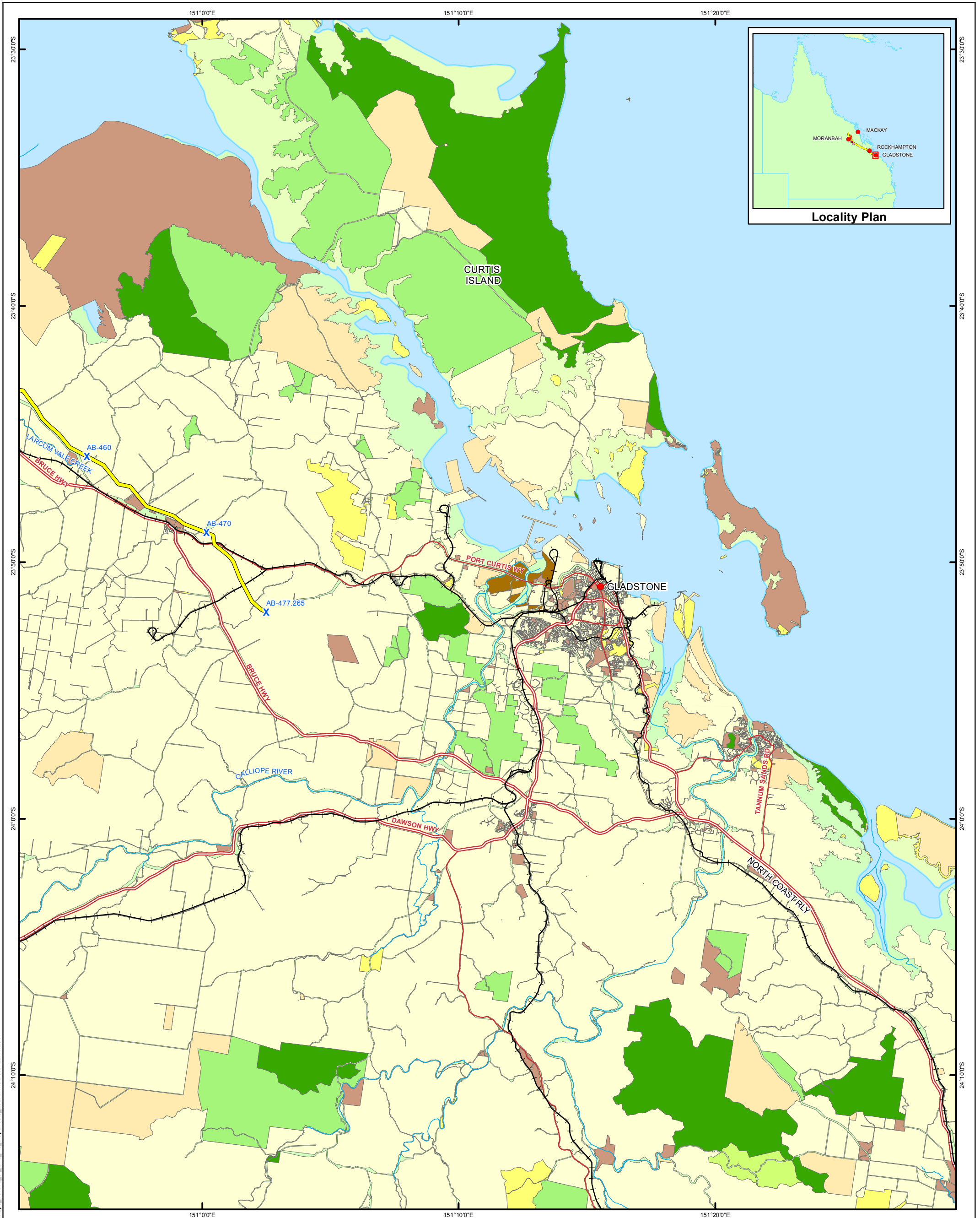
Scale: 1:250,000 @ A3  
 Coordinate System: GCS GDA 1994

**NOT FOR CONSTRUCTION**

Document: I:\ENVR\Projects\EN02962\_Spatial\ArcGIS\2\Map3\_Tenure\_of\_land\_A3\_MapSheets\_250K.mxd Date: 22/11/2011



# ARROW BOWEN PIPELINE PRELIMINARY ROUTE (REV D)



**Map 3: Tenure of land**

● Localities	— Highways	■ FD - Below the Depth Plans	■ LL - Lands Lease	■ RY - Railway
✕ Kilometre Points	— Major Roads	■ FH - Freehold	■ MR - Main Road	■ SF - State Forest
— AB Mainline Rev D	— Major Watercourses	■ FR - Forest Reserve	■ MT - Mines Tenure	■ SL - State Land
— Dysart Lateral Rev D	■ CA - Commonwealth Acquisition	■ HL - Housing Land	■ NP - National Park	■ TP - Transferred Property
— Elphinstone Lateral Rev D	■ CV - Covenant	■ HM - Boat Harbours	■ PH - Port and Harbours Boards	■ TR - Timber Reserve
— Saraji Lateral Rev D	■ ID - Industrial Estates	■ RE - Reserve	■ WR - Water Resource	
— Railways				

Data Sources:  
 StreetPro: Localities, Roads, Railways  
 DERM: Land Tenures, Major Watercourses  
 Data Supplied by Arrow Energy:  
 ABP Mainline RevD,  
 ABP Lateral RevD  
 Kilometre Points

Scale: 1:250,000 @ A3  
 Coordinate System: GCS GDA 1994

**NOT FOR CONSTRUCTION**

Document: I:\ENVR\Projects\EN02962\_Spatial\ArcGIS\2\Map3\_Tenure\_of\_land\_A3\_MapSheets\_250K.mxd Date: 22/11/2011