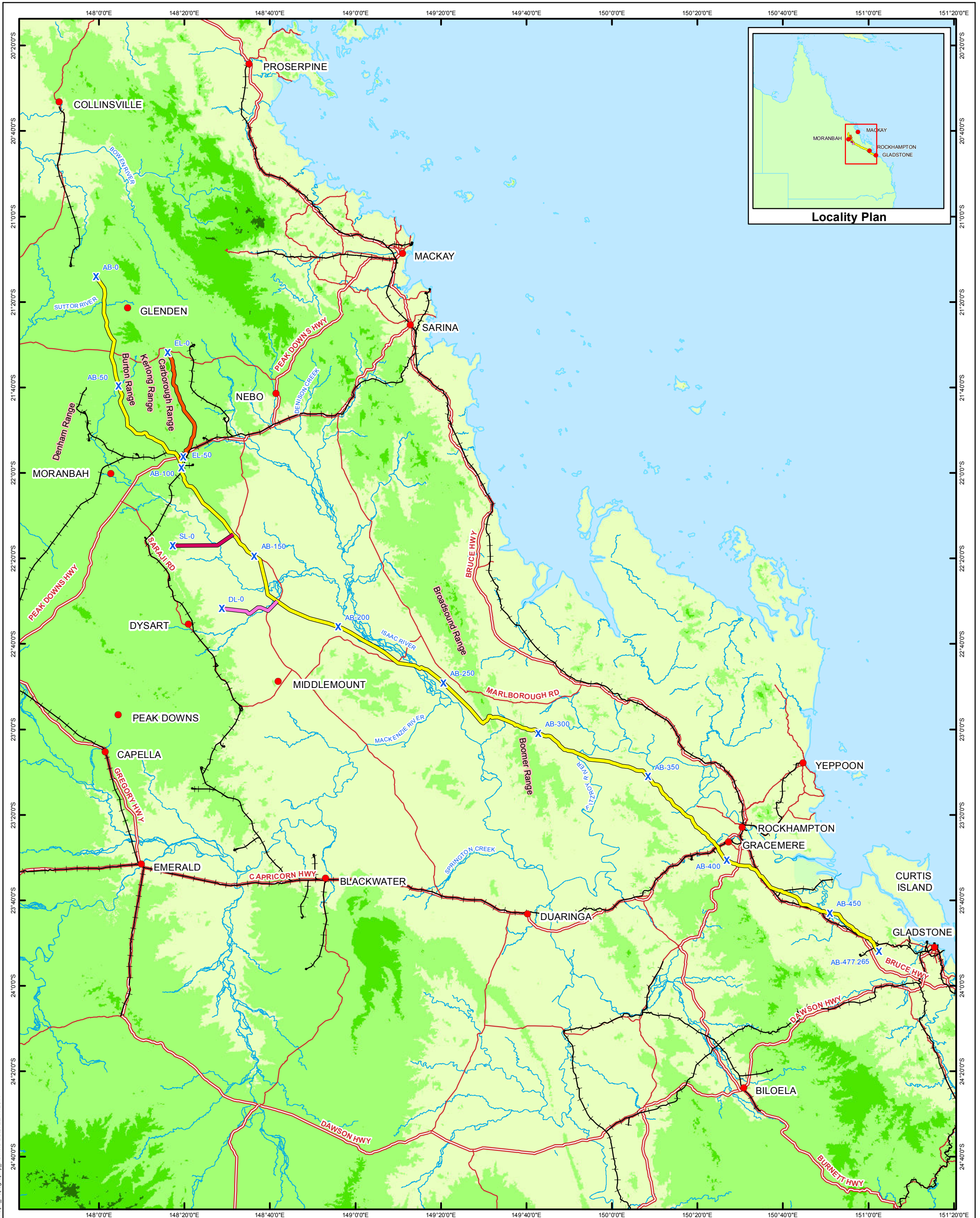


ARROW BOWEN PIPELINE PRELIMINARY ROUTE (REV D)



Map 4: Topography

- | | | |
|-----------------------------|----------------------|----------------------------------|
| ● Localities | — Highways | Shuttle Radar Topography Mission |
| ✕ Kilometre Points | — Major Roads | Elevation (m) |
| — AB Mainline Rev D | — Major Watercourses | 0 - 200 |
| — Dysart Lateral Rev D | | 200 - 500 |
| — Elphinstone Lateral Rev D | | 500 - 1,000 |
| — Saraji Lateral Rev D | | > 1,000 |
| — Railways | | |

Data Sources:
 StreetPro: Localities, Roads, Railways
 DERM: Major Watercourses
 DEM Shuttle Radar
 Topography Mission
 Data Supplied by Arrow Energy:
 ABP Mainline RevD,
 ABP Lateral RevD
 Kilometre Points

N

arrowenergy
go further

0 25 50
Kilometres

Scale: 1:1,500,000 @ A3
Coordinate System: GCS GDA 1994

NOT FOR CONSTRUCTION

Document: I:\ENVR\Projects\EN02962_Spatial\ArcGIS\2\Map4_Topography_A3.mxd Date: 22/11/2011